

MegaTron^{XT} Controller

Microprocessor Control of:

- Water treatment sensors
- Service Reports
- 4-20mA In & Outs




Key Features

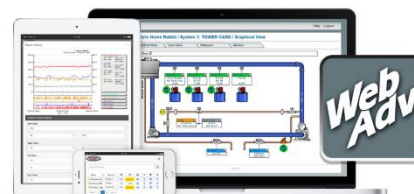
- Up to:
 - 8 Different pre-assigned sensors
 - Up to 16 mA Inputs
 - Up to 8 mA Outputs
 - 10 Digital inputs
 - 14 Flowmeter inputs
- 10 Output control relays (powered or dry)
- Internet and Modbus Communications
- Large customizable touch screen display
- On Screen History Graphs
- USB history download and settings cloning
- Multi-Level security
- Card slots for easy field upgrades

Application

The MegaTron XT touchscreen controller is the latest innovation in our highly acclaimed MegaTron product line.

Units can be configured to control a wide range of digital and analog inputs. Advanced relay logic and customization lets you configure a unit to meet your specific system needs.

XT touch units can control tower, boiler, wastewater or other industrial applications and provide web based communications and reporting with WebAdvantage.



Build a Model X T C P R F E - N8 V Z1

Step 1 system card functions

Conductivity	
B2	Boiler with BE-32C
C	Tower with TE-4A
C12	Low range with AL-4ASS

Misc Conductivity	
M	General range with DI-4A
M4	General range with TE-4A

pH	
P	Single set point with TPE-21
Q	Dual set point with TPE-21

ORP	
R	Standard with TOE-21

Feed Timers	
F	Five selectable

Flow Assembly	
E	Float style flow switch, PVC
E6	Flow input only

Step 2 whole unit options

XT standard features include 5 control relays with prewired USA cords and WebAdvantage communications. List any desired options in alphabetical order.

Power Cord Options		100-230 VAC except A22
A	All 1/2" FNPT conduit connections	
A2	Class F cord, no relay pigtailed, CE mark	
A3	Liquid tight only, CE mark	
A5	USA power cord, no relay pigtailed	
A7	Class I cord, no relay pigtailed, CE mark	
A8	Prewired USA cord, 1/2" conduit relay	
A22	24 VDC power instead of 100-230 VAC	

Communication Options		WebAdv standard
H2	Adds Wi-fi module to built-in WebAdv coms	
H3	No active WebAdvantage communications	
H25	Dual network w/ Modbus TCP/IP read/write	
H26	Dual network w/ BACnet TCP/IP read/write	

Relay Options		(2.5 amp each)
K1	(5) relay card not connected to power	
K2	(5) relay card all set for dry contact	
K3	No control relays	
K7	(7) powered relays and (3) dry contact relays	

mA In/Out Signals		16 signals max
N4	(4) mA inputs	
N8	(8) mA inputs	
N12	(12) mA inputs and (4) outputs	
N16	(16) mA inputs and (0) outputs	
O4	(4) mA isolated outputs	
O8	(8) mA isolated outputs	

Accessories	
T	Configured for mounting of separately ordered CELLADV-0-12 or -24 inside controller
V	24 VDC power for external signals
W	(5) additional flowmeter pulse inputs
Y	ETL Agency Listings (USA, CSA)
Z	Black display cover
Z1	Clear display cover

Tower / general range conductivity sensors include a temperature reading. Additional sensor types are available. Consult dealer for additional options.

Specifications

Electrical Input	100-230 VAC, 50/60 Hz	Relative Humidity	0 to 100%
Relay Outputs	Individually fused and 2.5 amps. Dry contact limited to 2.5 mA at 28 VDC.	Conductivity Control	µS/cm, mS/cm, PPM scales up to 50,000 depending on sensor selection
Display	6.875" Diagonal LCD Touch Screen	pH Control	0-14 with single or optional dual set point
Digital Inputs	Inputs have 10K Ω pullup to 3.3 VDC from open collector open drain output	ORP Control	+/- 1,000 mV, 2nd set point timer linked
Flow Totalizing Inputs	10K Ω pullup to 5 VDC max rate 2.5 KHz from open collector open drain output	Accuracy	+/- 1% of scale
mA Inputs	Optical isolation, 250 Ω / 5 VDC @ 20 mA. Loop voltage to not exceed 30 VDC.	Selectable Feed Timers	Water meter pulse, Percent, Post, Limit, Recycle, and 28 day with reminder 1 for loss flow.
mA Outputs	Non-isolated. 12 VDC max load = 400 Ω. Isolated ext 24 VDC max load = 800 Ω.	mA Input Control	Customizable to desired range and scale
Ethernet	DHCP or static capable with 10/100 WiFi 802.11 (b/g/n)	mA Output	Proportional with second input conditioning
Approvals	CE, UL61010-1/CSA C22.2 No. 61010-1-12 + A1:2022 (R2022)	Tower probes supplied in 3/4" quick release PVC tees. pH and ORP probe bodies are CPVC.	
Enclosure	NEMA 4X style polycarbonate	TE-4A	150 psi (10.3 bar), 140°F (60°C) max
Ambient Temp	0° to 125°F (-17° to 52°C)	TPE-21	100 psi (6.8 bar), 140°F (60°C) max
Shipping Weight	Approximately 10 lbs. (4.536 kg)	TOE-21	100 psi (6.8 bar), 140°F (60°C) max
Dimensions	11" (27.94cm) W x 11.75" (29.84 cm) H	FS-OC (flow switch)	140 psi (9.6 bar), 140°F (60°C) max
		AL-4ASS	100 psi (6.8 bar), 212°F (100°C) max
		BE-32C	250 psi @ 400°F, SS/PEEK with 1" cross