

# HGV TANK CLEANING





## sera HGV TANK CLEANING SYSTEMS

### CONTINUOUS OPERATION IS OUR STANDARD

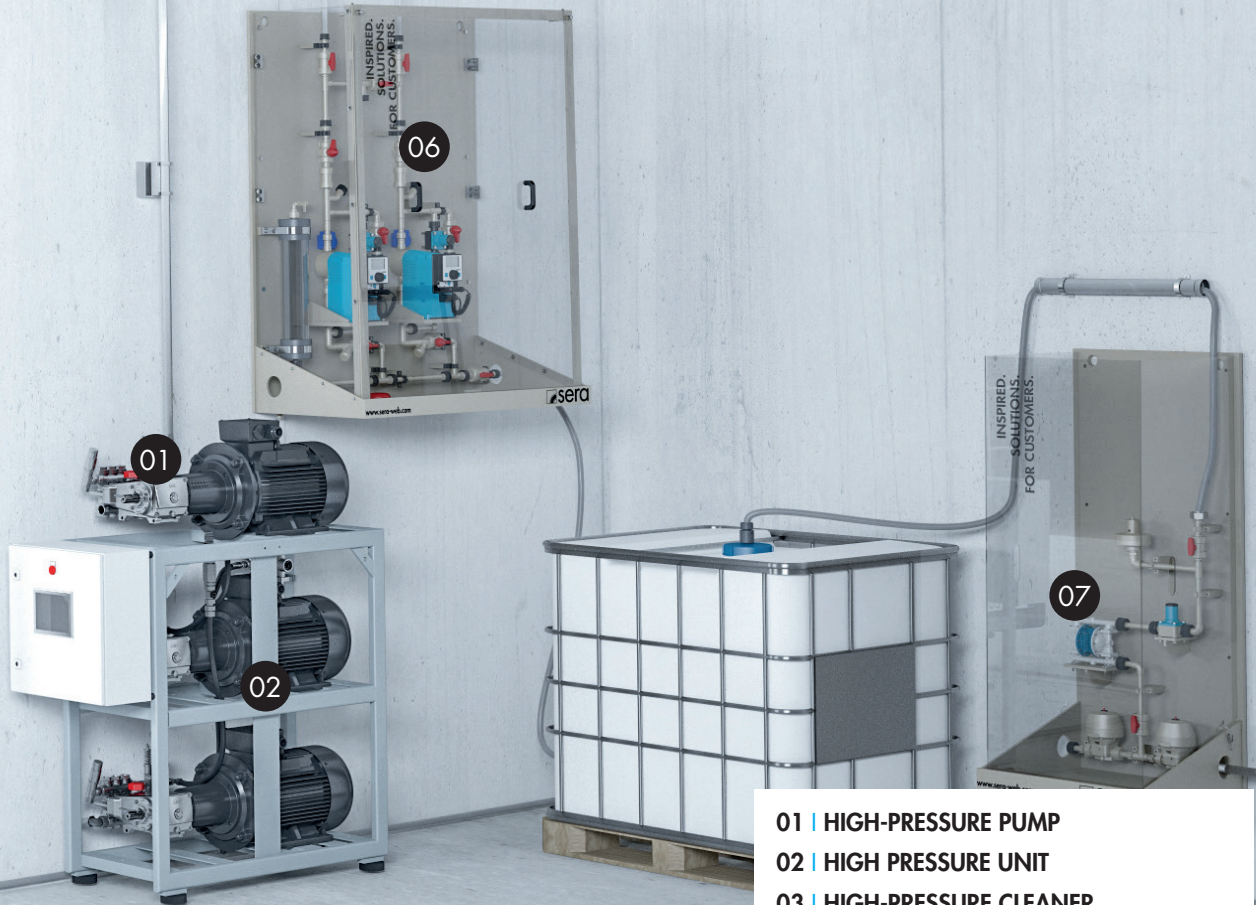
Thanks to our many years of know-how, not only in cleaning technology but also in dosing technology, we provide the possibility of an all-in-one customised solution from a single source!

As a pump manufacturer, we supply all the components needed for professional HGV tank cleaning:

- High-pressure pumps for continuous operation
- Tank cleaning heads
- Dosing pumps for detergent dosing
- Pumps for transferring the chemicals
- Water treatment / polymer systems from our own production
- Control technology
- Accessories such as hose reels, HP lances, hoses...
- Installation & commissioning by our installers

Our industrial systems are coordinated with each other and are suitable for service water, hot water and 24-hour operation.

# EXCELLENCE IN FLUID TECHNOLOGY



- 01 | HIGH-PRESSURE PUMP
- 02 | HIGH PRESSURE UNIT
- 03 | HIGH-PRESSURE CLEANER
- 04 | OPTIONS FOR HIGH-PRESSURE CLEANER
- 05 | TANK CLEANING HEAD
- 06 | DOSING TECHNOLOGY
- 07 | PNEUMATICS

## sera ProDos GmbH

sera-Straße 1  
D-34376 Immenhausen  
Germany

Tel. +49 5673 999-02

[sales.prodos@sera-web.com](mailto:sales.prodos@sera-web.com)

## sera Technology Austria GmbH

Gewerbestraße 5  
A-4774 St. Marienkirchen bei Schärding  
Austria

Tel. +43 7711 31777-0

[sales.at@sera-web.com](mailto:sales.at@sera-web.com)

## sera Technology Swiss GmbH

Altenmattweg 5  
CH-4144 Arlesheim  
Switzerland

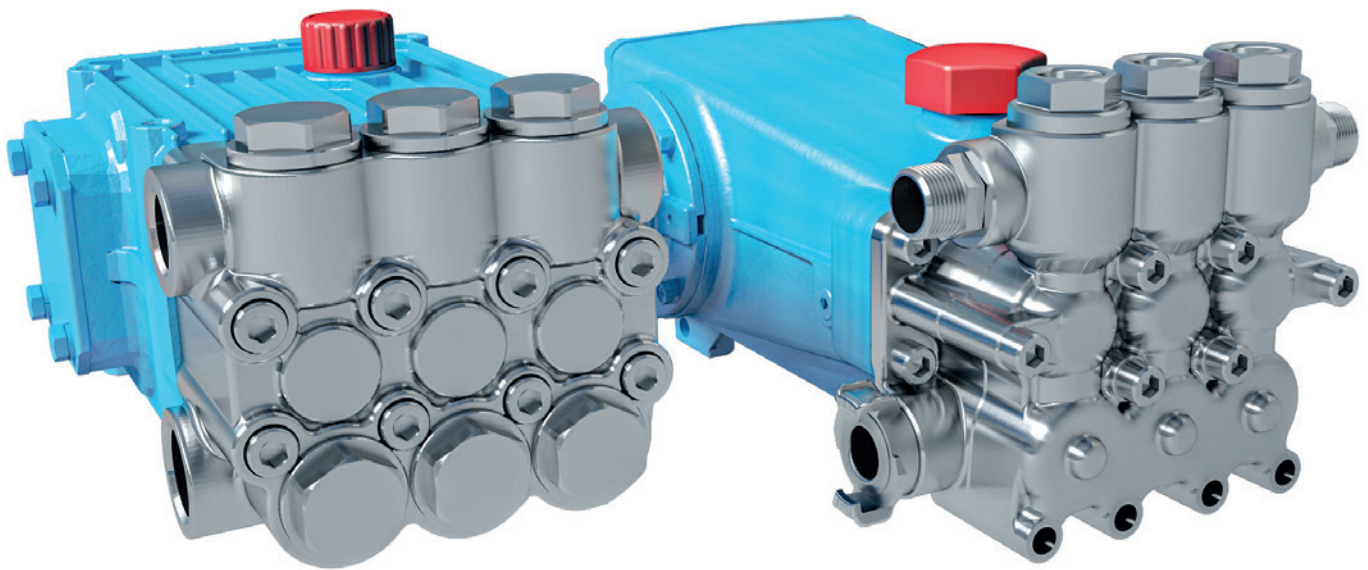
Tel. +41 61 51142-60

[sales.ch@sera-web.com](mailto:sales.ch@sera-web.com)

# HIGH-PRESSURE PUMPS

## FOR CONTINUOUS OPERATION

**sera** supplies high-pressure pumps and high-pressure pump units for a wide range of applications in which liquids have to be pumped at high pressure. Triplex plunger pumps, which are included in the category of positive and oscillating displacement pumps, are mainly used for this purpose. Other specifications and modes of operation of the pumps can of course be selected on customer request.



### ADDITIONAL PRODUCT RANGE

- Complete accessories for high-pressure cleaning (valves, hoses, guns, lances, etc.)
- Nozzle technology for many different applications
- Tank cleaning heads for internal tank cleaning
- Dosing technology for wash chemicals

### OVERVIEW OF ADVANTAGES

- 3 plungers made of resilient ceramics
- High quality materials
- Linear control characteristics
- Low-maintenance
- Low operating costs
- Simple to use
- Version according to ATEX available
- Seals according to FDA available
- Temperatures -23 °C ... +116

# HIGH PRESSURE UNIT

## FOR HIGH PRESSURE APPLICATIONS

The high-pressure technology we provide covers a wide range of applications and, of course, we would like to provide the solution that is ideally suited to customer requirements.



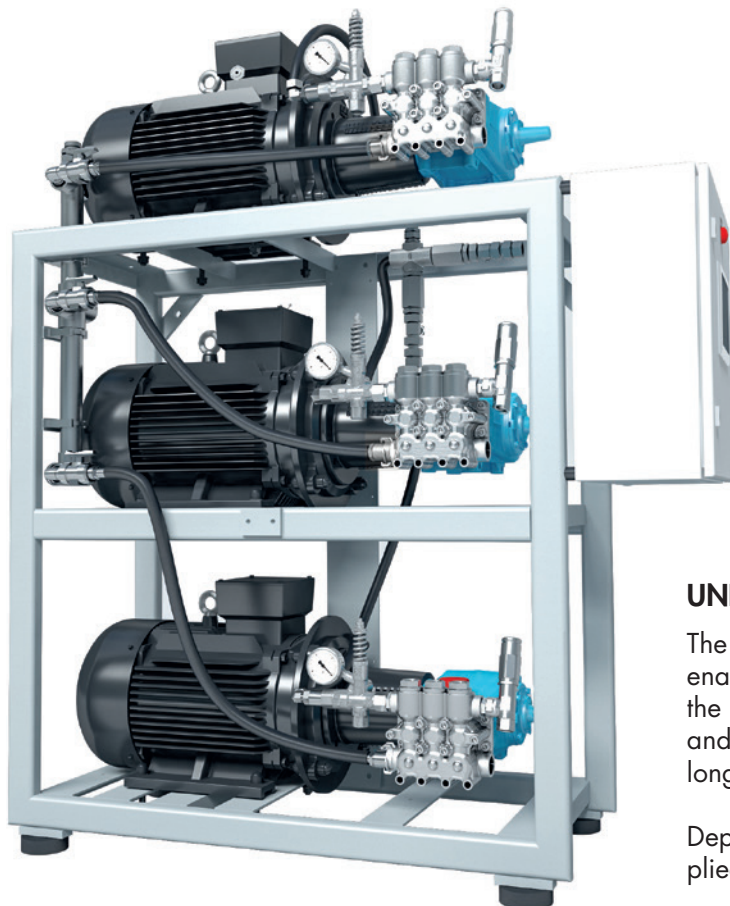
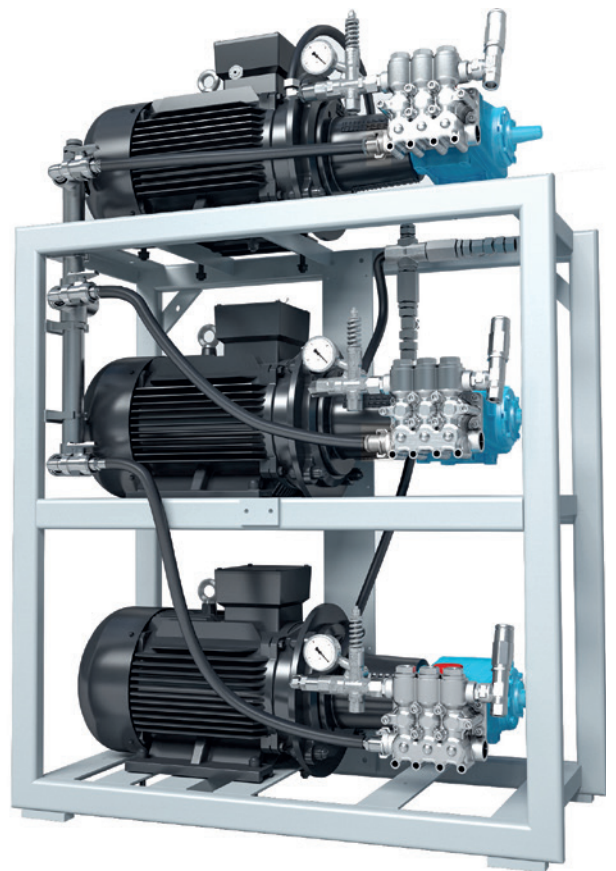
### PUMP / MOTOR UNITS

The basic configuration, on which all further units are built, consists of a motor and the robust and durable pump. The mounting or fixing of this unit can be done by the customer as desired.

### UNITS WITHOUT CONTROLLER

The addition of a frame to the pump/motor unit makes it easy to install the unit.

Due to the modular principle, it is already possible here to arrange several units in a space-saving combination.



### UNITS WITH CONTROLLER

The addition of a controller to the unit in the (cube) frame enables demand-oriented control. This control ensures that the required performance is achieved with minimal energy and water consumption, a high degree of efficiency and a long service life.

Depending on customer requirements, this unit can be supplied with frequency control or cascade control.

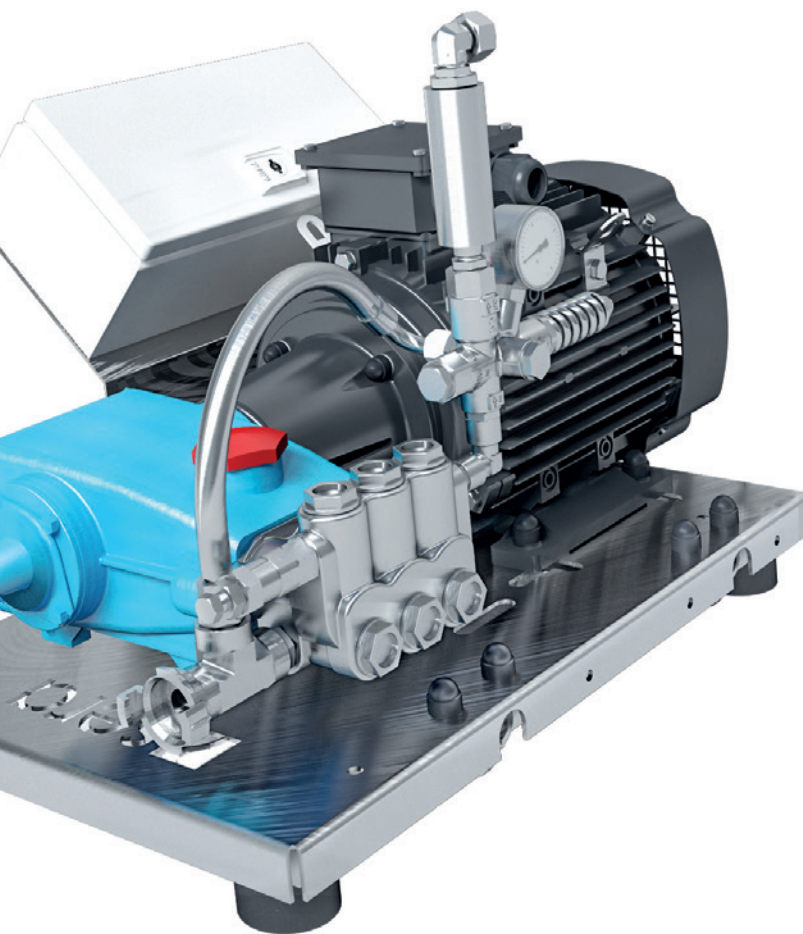
# HIGH-PRESSURE CLEANER

## STATIONARY OR MOVABLE

This unit has been designed for commercial use. The unit in its compact design is particularly space-saving and, with the integrated electrical controller, 3 m cable and 16 A CEE standard plug, is completely ready for connection. The high-pressure pump unit can be operated with fresh water as well as with service water.

### FUNCTION DESCRIPTION

If the pressure drops (actuation of the gun), the unit switches on automatically. When the gun is closed, the unit switches to standby mode after a delay of 3-30 s (adjustable) and restarts immediately when the gun is actuated again. If the water supply is interrupted, the unit does not switch on, therefore there is a safeguard against dry running (does not apply to operation without upstream pressure).

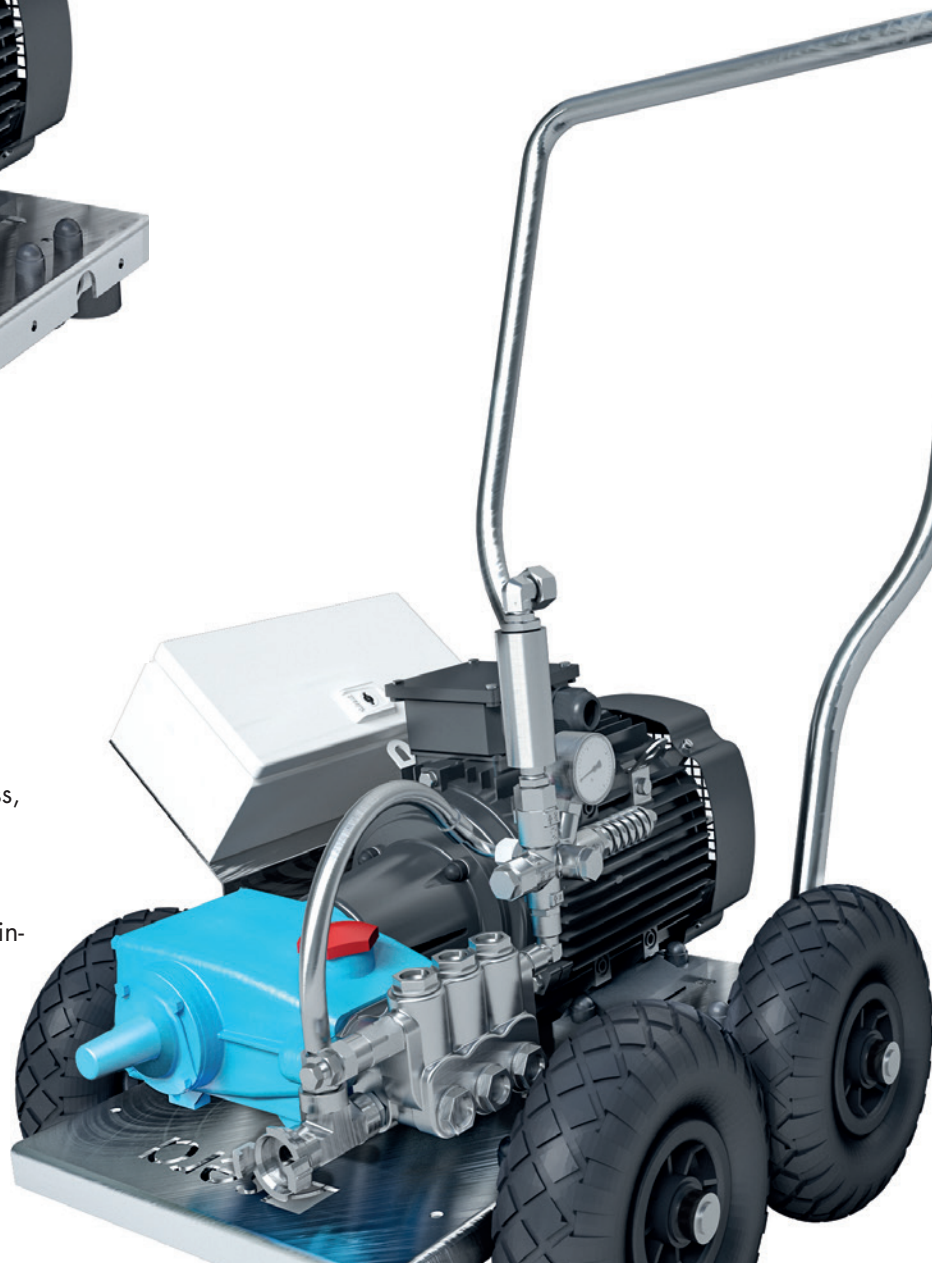


### OVERVIEW OF ADVANTAGES

- Standardised pre-wash equipment
- Compact design
- Integrated controller
- Suitable for fresh and service water

### HIGH-PRESSURE PUMP

- Pump head made of corrosion-resistant brass, NiAlBr, stainless steel, duplex stainless steel and other special materials
- Plunger made of hard ceramics (solid)
- Valves, valve seats and springs made of stainless steel
- Seals made of special material
- Integrated leakage return
- Quiet running
- Crankcase made of die-cast aluminium
- Crankshaft made of forged CrMo steel



## STATIONARY HIGH-PRESSURE CLEANER **HPCcenter**

Type	Delivery rate * [l/min.]	Operating pressure * [bar]	Speed [rpm]	Motor power [kW]
HPC 10/150 C	10	150	1440	4.0
HPC 10/200 C	10	200	968	4.0
HPC 13/150 C	13	150	1440	4.0
HPC15/150 C	15	150	968	4.0
			1400	5.5
HPC 15/200 C	15	200	1450	5.5
HPC 19/140 C	19	140	1450	5.5
HPC 20/140 C	20	140	1450	5.5
HPC 21/100 C	21	100	968	4.0
HPC 23/110 C	23	110	1450	5.5

## MOVABLE HIGH-PRESSURE CLEANER **HPCmove**

Type	Delivery rate * [l/min.]	Operating pressure * [bar]	Speed [rpm]	Motor power [kW]
HPC 10/150 M	10	150	1440	4.0
HPC 10/200 M	10	200	968	4.0
HPC 13/150 M	13	150	1440	4.0
HPC15/150 M	15	150	968	4.0
			1400	5.5
HPC 15/200 M	15	200	1450	5.5
HPC 19/140 M	19	140	1450	5.5
HPC 20/140 M	20	140	1450	5.5
HPC 21/100 M	21	100	968	4.0
HPC 23/110 M	23	110	1450	5.5

\*Special delivery rate and operating pressures on request.

# ADDITIONAL OPTIONS

## FOR HIGH-PRESSURE CLEANERS

In combination with our extensive range of accessories, individual customer requirements can be realised.

### THE FOLLOWING ARE AVAILABLE:

- Nozzles and cleaning accessories
- Spray guns, lances & jet pipes
- High pressure hoses
- Hose reels
- Valves, fittings & screw connections
- and many more





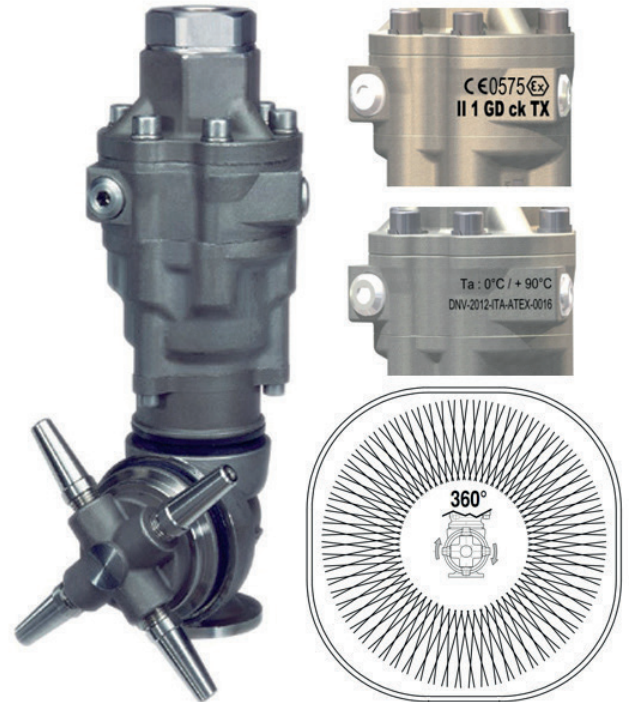
# TANK CLEANING HEADS

## FOR INTERNAL TANK CLEANING

**sera** supplies tank cleaning heads specially designed for internal tank cleaning. The tank cleaning heads are ideally matched to the high-pressure pumps used and are driven by both water and electric motor.

**sera** nozzle technology provides the tank cleaning heads with the appropriate nozzles for this purpose in order to achieve an ideal cleaning result.

The tank cleaning heads are also approved for potentially explosive atmospheres (according to ATEX).



# sera DOSING TECHNOLOGY

## FOR DOSING THE CHEMICALS AND/OR CLEANING AGENTS

The **sera** dosing technology used is matched to your cleaning process. As one of the leading manufacturers of dosing pumps and systems, **sera** is your ideal contact here.

All our systems are suitable for continuous operation and service water (treated water).

**sera** is the only manufacturer to offer the right dosing technology for your application in a configurable modular system. With a solenoid actuator, stepper motor or three-phase motor, coupled with the appropriate communication option (manual, conventional such as 4-20 mA or pulse, PROFIBUS or PROFINET), the right answer can be found for a wide range of tasks.

### OVERVIEW OF ADVANTAGES

- State-of-the-art pump technology
- Standardised mounting plates
- Space-saving wall mounting
- Wide range of applications
- High safety standard
- Wide power range
- Simple operation
- Low-maintenance
- Complete range of accessories



# WATER TREATMENT FOR POLYMERS

Polymer solutions are used wherever the sedimentation or flotation of suspended solids in water should be accelerated and the dewatering behaviour of thickened sludge should be improved, such as in the treatment of drinking, service, process and waste water.

The PolyLine from sera is a series of simple and flexible as well as economical and high-performance systems for the preparation of polymers. The series covers preparation systems that can be operated with dry or liquid polymers. The systems are equipped with precise flow measurement for solution preparation and level measurement to ensure the efficient and economical operation of the systems.

## OVERVIEW OF ADVANTAGES

- Customer and application-specific polymer preparation systems from the modular system
- High quality PP tank
- Can be used in a variety of ways with powder, liquid or powder/liquid combination polymers
- High process efficiency due to almost complete dissolving of the newly prepared polymer
- Exact compliance with the solution concentration due to reproducible calibration of the dry material feeder or liquid concentrate pump
- Low-maintenance level measurement using continuous and non-contact ultrasonic sensor
- High ease of use due to compact PLC with integrated process visualisation and touch screen
- Modular design from the tool box
- Can be optionally extended according to customer requirements with products from the **sera** product range



FOLLOW US

