

# MegaTron **XK** Controller

## Microprocessor Control of:

- Water treatment sensors
- Service Reports
- 4-20mA In & Outs



## Key Features

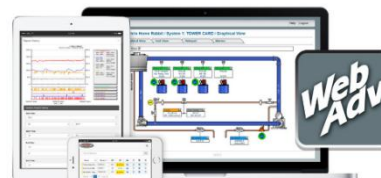
- Up to:
  - 8 Different pre-assigned sensors
  - Up to 16 mA Inputs
  - Up to 8 mA Outputs
  - 10 Digital inputs
  - 14 Flowmeter inputs
- 5 Output control relays (powered or dry)
- Internet and Modbus Communications
- Customizable LCD Display
- Simple ATM style menu
- On Screen History Graphs
- USB history download and settings cloning
- Multi-Level security
- Card slots for easy field upgrades

## Application

The MegaTron XK offers all the features and options of the popular MegaTron XS in a new rugged enclosure to accommodate even more options to meet today's water treatment system requirements.

Units can be configured to control a wide range of digital and analog inputs. Advanced relay logic and customization lets you configure a unit to meet your specific system needs.

XK units can control tower, boiler, wastewater or other industrial applications and provide web based communications and reporting with WebAdvantage.



## Build a Model .....X K **C P R F E** – **H2 N8 Z1**

### Step 1 system card functions

Conductivity	
B2	Boiler with BE-32C
C	Tower with TE-4A
C12	Low range with AL-4ASS
Misc Conductivity	
M	General range with DI-4A
M4	General range with TE-4A
pH	
P	Single set point with TPE-21
Q	Dual set point with TPE-21
ORP	
R	Standard with TOE-21
Feed Timers	
F	Five selectable
Flow Assembly	
E	Float style flow switch, PVC
E6	Flow input only

### Step 2 whole unit options

XK standard features include 5 control relays with prewired USA cords. List any desired options in alphabetical order.

Power Cord Options		100-230 VAC except A22
A	All 1/2" FNPT conduit connections	
A2	Class F cord, no relay pigtails, CE mark	
A3	Liquid tight only, CE mark	
A5	USA power cord, no relay pigtails	
A7	Class I cord, no relay pigtails, CE mark	
A8	Prewired USA cord, 1/2" conduit relay	
A22	24 VDC power instead of 100-230 VAC	

Communication Options		No comms standard
H2	WebAdvantage only no Wi-fi	
H	WebAdvantage only with Wi-fi	
H11	Internet card, CAT5, and Modbus TCP/IP	
H21	Internet card, CAT5, and BACnet TCP/IP	

Relay Options		(2.5 amp each)
K1	(5) relay card not connected to power	
K2	(5) relay card all set for dry contact	
K3	No control relays	

mA In/Out Signals		8 signals max
N4	(4) mA inputs	
N8	(8) mA inputs (no O4)	
O4	(4) mA isolated outputs	

Accessories	
T	Configured for mounting of separately ordered CELLADV-0-12 or -24 inside controller
V	24 VDC power for external signals
W	(5) additional flowmeter pulse inputs
Y	ETL Agency Listings (USA, CSA)
Z	Black display cover
Z1	Clear display cover

Tower / general range conductivity sensors include a temperature reading. Additional sensor types are available. Consult dealer for additional options.

## Specifications

<b>Electrical Input</b>	100-230 VAC, 50/60 Hz	<b>Relative Humidity</b>	0 to 100%
<b>Relay Outputs</b>	Individually fused and 2.5 amps. Dry contact limited to 2.5 mA at 28 VDC.	<b>Conductivity Control</b>	µS/cm, mS/cm, PPM scales up to 50,000 depending on sensor selection
<b>Display</b>	240 x 128 graphic LCD	<b>pH Control</b>	0-14 with single or optional dual set point
<b>Digital Inputs</b>	Inputs have 10K Ω pullup to 3.3 VDC from open collector open drain output	<b>ORP Control</b>	+/- 1,000 mV, 2nd set point timer linked
<b>Flow Totalizing Inputs</b>	10K Ω pullup to 5 VDC max rate 2.5 KHz from open collector open drain output	<b>Accuracy</b>	+/- 1% of scale
<b>mA Inputs</b>	Optical isolation, 250 Ω / 5 VDC @ 20 mA. Loop voltage to not exceed 30 VDC.	<b>Selectable Feed Timers</b>	Water meter pulse, Percent, Post, Limit, Recycle, and 28 day with reminder 1 for loss flow.
<b>mA Outputs</b>	Non-isolated. 12 VDC max load = 400 Ω. Isolated ext 24 VDC max load = 800 Ω.	<b>mA Input Control</b>	Customizable to desired range and scale
<b>Ethernet</b>	DHCP or static capable with 10/100 WiFi 802.11 (b/g/n)	<b>mA Output</b>	Proportional with second input conditioning
<b>Approvals</b>	CE, UL61010-1/CSA C22.2 No. 61010-1-12 + A1:2022 (R2022)	Tower probes supplied in 3/4" quick release PVC tees. pH and ORP probe bodies are CPVC.	
<b>Enclosure</b>	NEMA 4X style polycarbonate	<b>TE-4A</b>	150 psi (10.3 bar), 140°F (60°C) max
<b>Ambient Temp</b>	0° to 125°F (-17° to 52°C)	<b>TPE-21</b>	100 psi (6.8 bar), 140°F (60°C) max
<b>Shipping Weight</b>	Approximately 10 lbs. (4.536 kg)	<b>TOE-21</b>	100 psi (6.8 bar), 140°F (60°C) max
<b>Dimensions</b>	11" (27.94cm) W x 11.75" (29.84 cm) H	<b>FS-OC (flow switch)</b>	140 psi (9.6 bar), 140°F (60°C) max
		<b>AL-4ASS</b>	100 psi (6.8 bar), 212°F (100°C) max
		<b>BE-32C</b>	250 psi @ 400°F, SS/PEEK with 1" cross